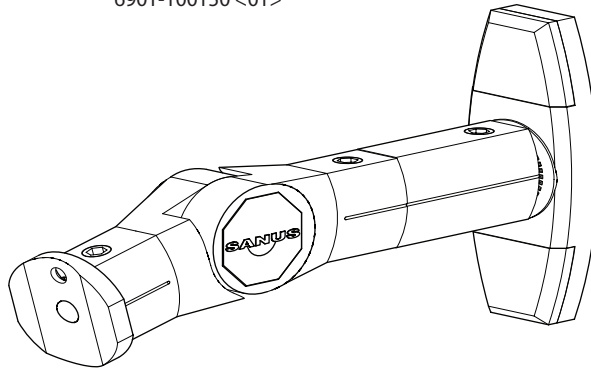


# SANUS | SYSTEMS

## WMS3

6901-100150 <01>



Thank you for choosing the Sanus Systems WMS3 wall mount. The Sanus Systems WMS3 wall mount is designed to support speakers weighing up to 3.62 kg (8 lbs.).



### CAUTION

This product is designed for use in wood stud and concrete block walls only! The wall must be capable of supporting up to five times the weight of the monitor and mount combined. If you have any doubts about the ability of the wall to support the monitor, contact Sanus Systems Customer Service, or a qualified contractor.



### WARNING

**This product contains small items that could be a choking hazard if swallowed. Keep these items away from young children!**

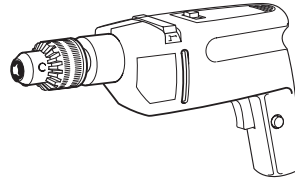
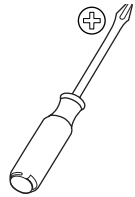
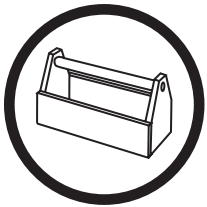


### CAUTION

Do not use this product for any purpose not explicitly specified by Sanus Systems. Improper installation or use may cause personal injury and/or property damage. If you do not understand these instructions, or if you have doubts about the safety of the installation, contact Sanus Systems Customer Service. Sanus Systems is not liable for injury or damage caused by incorrect installation or use.

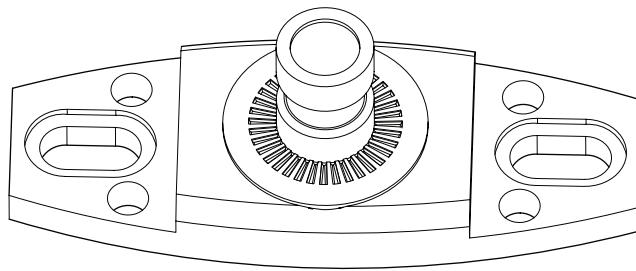


Hardware and procedures for multiple mounting configurations are included. When you see this symbol, choose the correct configuration to suit your needs. Not all hardware included will be used.

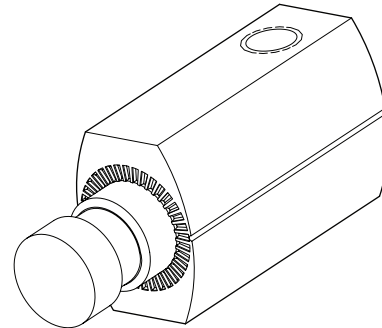


## Supplied Parts and Hardware

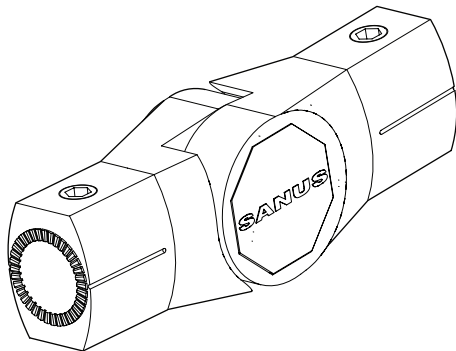
Before starting assembly, verify all parts are included and undamaged. If any parts are missing or damaged, do not return the item to your dealer; contact Sanus Systems Customer Service. Never use damaged parts!



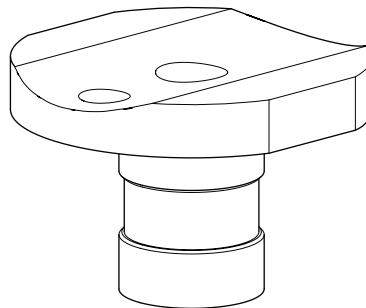
[01] x 4



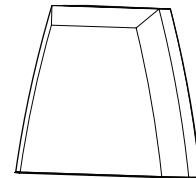
[02] x 2



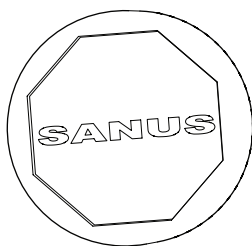
[03] x 2



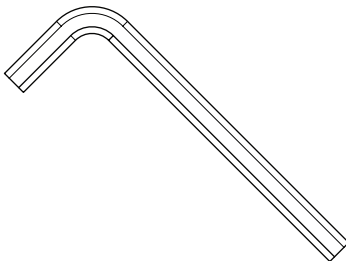
[04] x 2



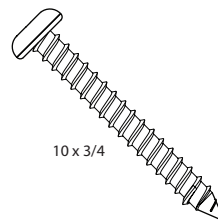
[05] x 8



[06] x 4

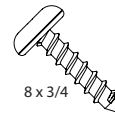


[07] x 1



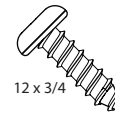
10 x 3/4

[08] x 4



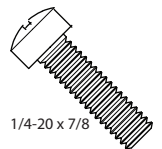
8 x 3/4

[09] x 2



12 x 3/4

[10] x 4



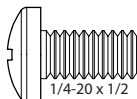
1/4-20 x 7/8

[11] x 2



M5 x 25mm

[12] x 2



1/4-20 x 1/2

[13] x 4



8-32 x 5/8

[14] x 2



M4 x 8mm

[15] x 2



Plastic Anchor

[16] x 4



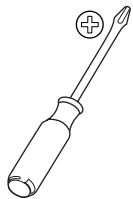
M5 x 1/8 spacer

[17] x 2



8-32 Keyhole Nut

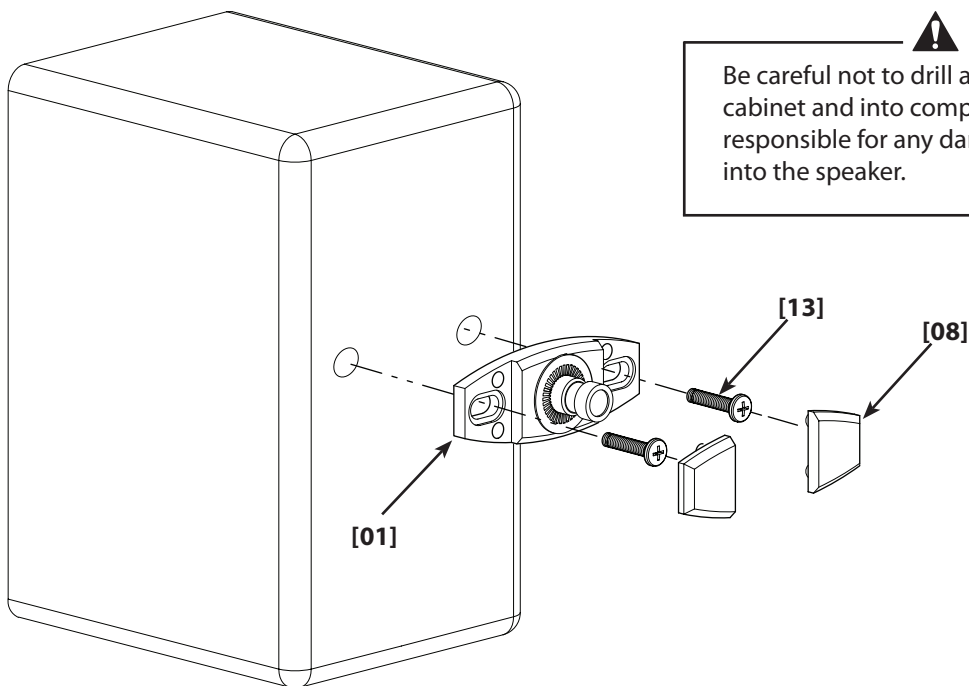
[18] x 2



# 1: Mount the Speaker Plate

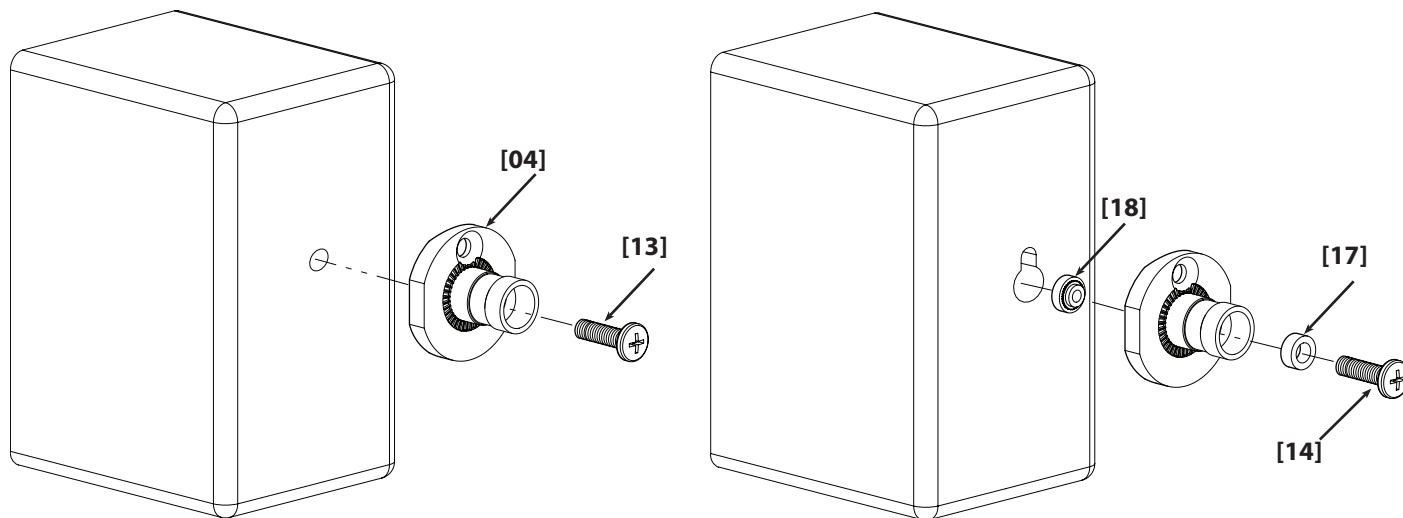
## Mounting to the Wall/Speaker Plate

For speakers with dual threaded inserts or are small wood speakers without inserts.



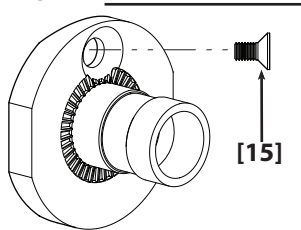
## Mounting to the Satellite Speaker Adapter

For speakers with a single threaded insert or keyhole mounting.



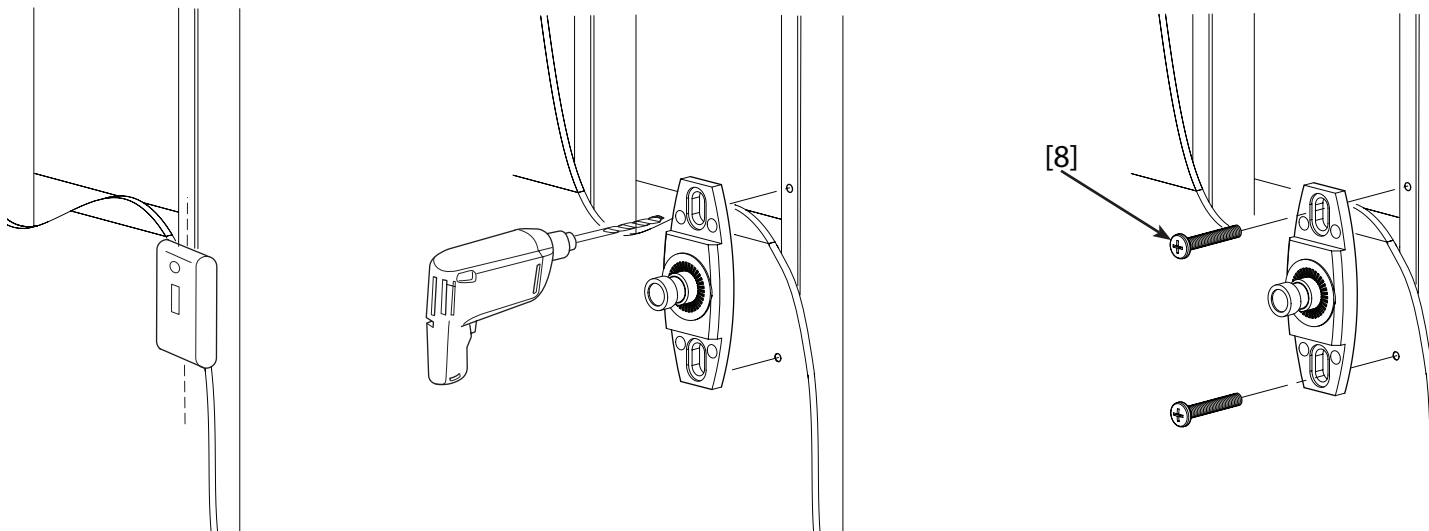
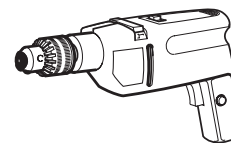
### NOTE

Bose speakers may require screw [15].

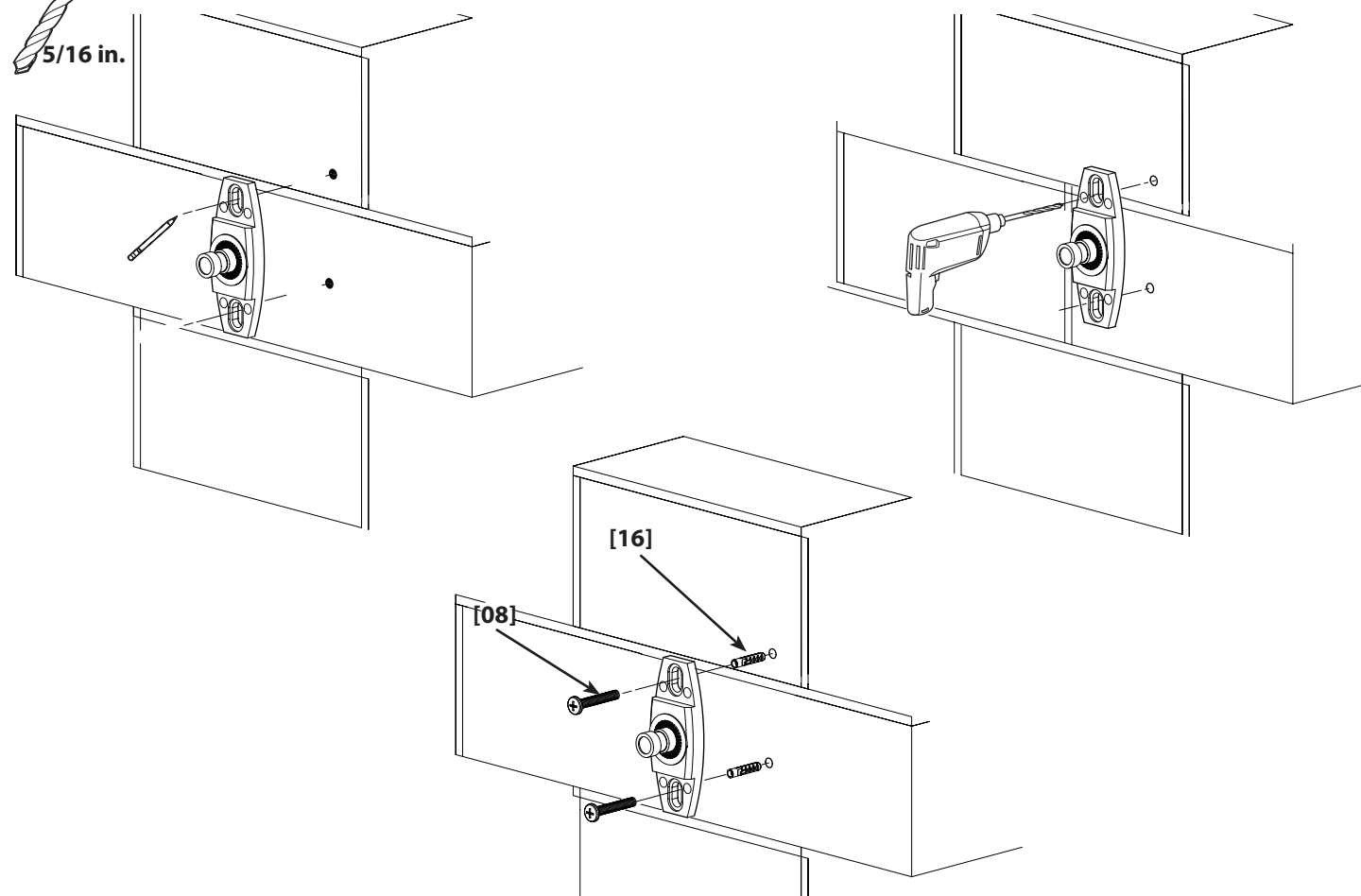




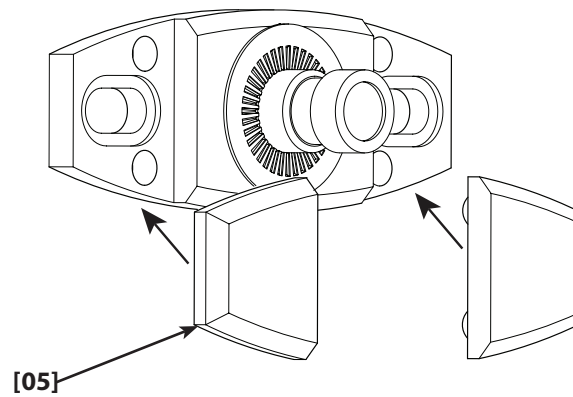
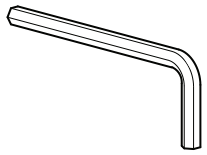
## 2: Mount the Wall Plate



### Mounting to Concrete Block



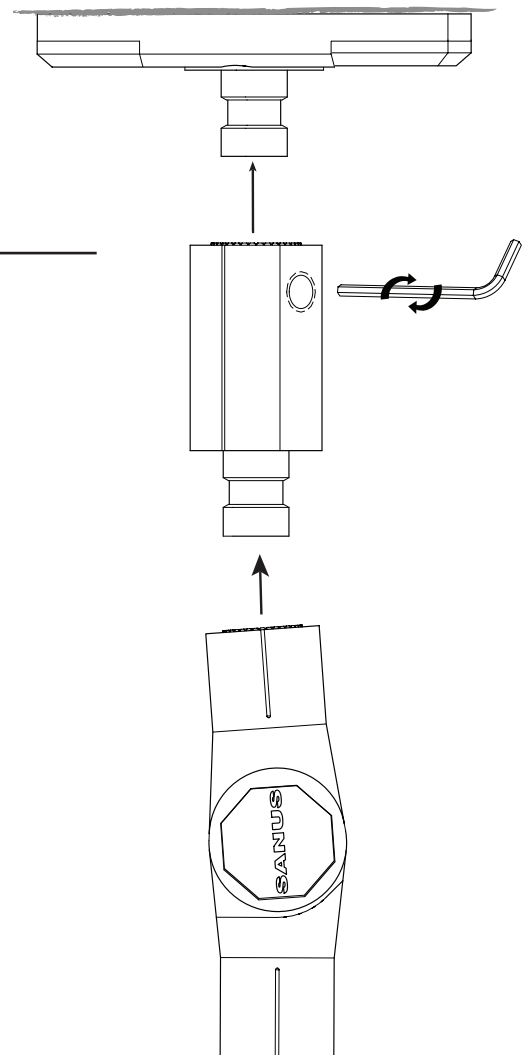
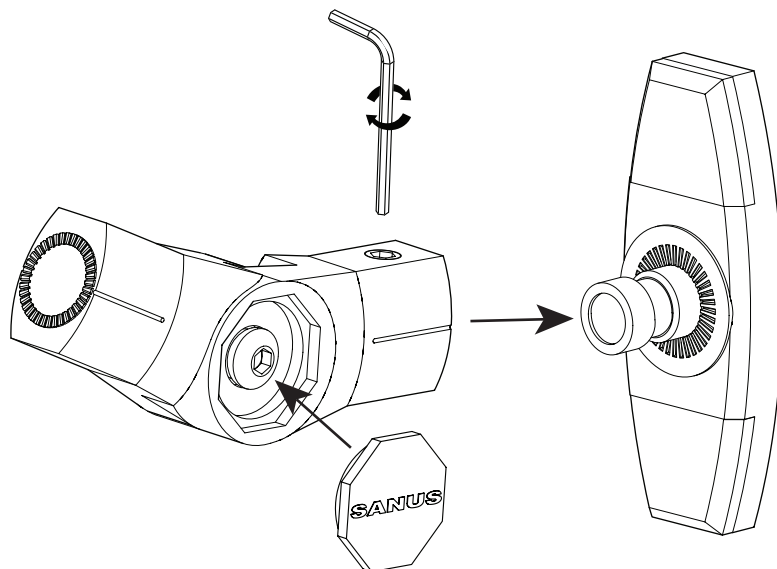
### 3: Install Covers and Arm



#### CAUTION

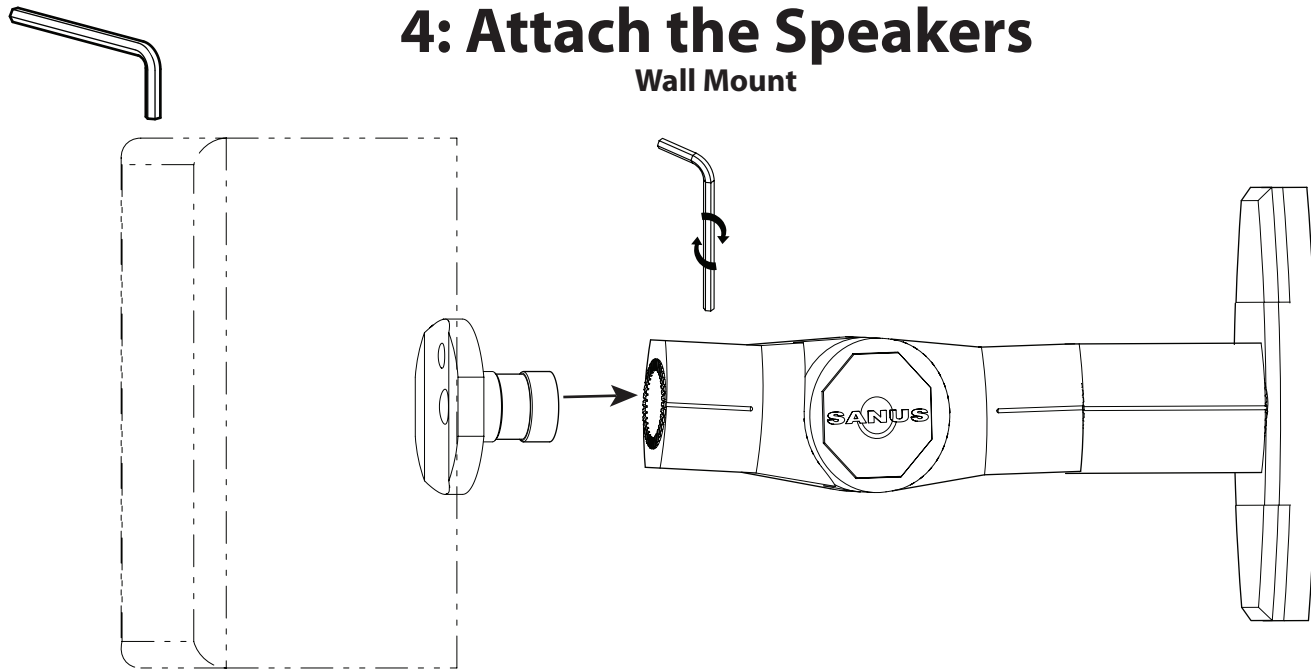
Do not overtighten. continuing to tighten the Allen set screw once it is snug will not make the connection stronger.

**OPT**



## 4: Attach the Speakers

### Wall Mount



### Ceiling Mount



#### CAUTION

Do not overtighten. continuing to tighten the Allen set screw once it is snug will not make the connection stronger.

